



# GRAVURE COATING MACHINE

Environment Friendly Engineering Solution Company



In Association with SVCH-Technologii, Moscow (Russia)

[www.kerone.com](http://www.kerone.com)

ISO 9001:2015 | ISO 14001:2015 | EMS 14001 | OHSAS 18001:2007

# About Kerone

KERONE now renowned name in serving specialized need of customers with best quality and economical process Heating /cooling and drying products, manufactured in high quality environment by well trained and qualified workforce(special purpose machineries) .

KERONE is pioneer in application and implementation engineering with its vast experience and team of professionals. KERONE is devoted to serve the industry to optimize their operations both economically and environmentally with its specialized heating and drying solutions.

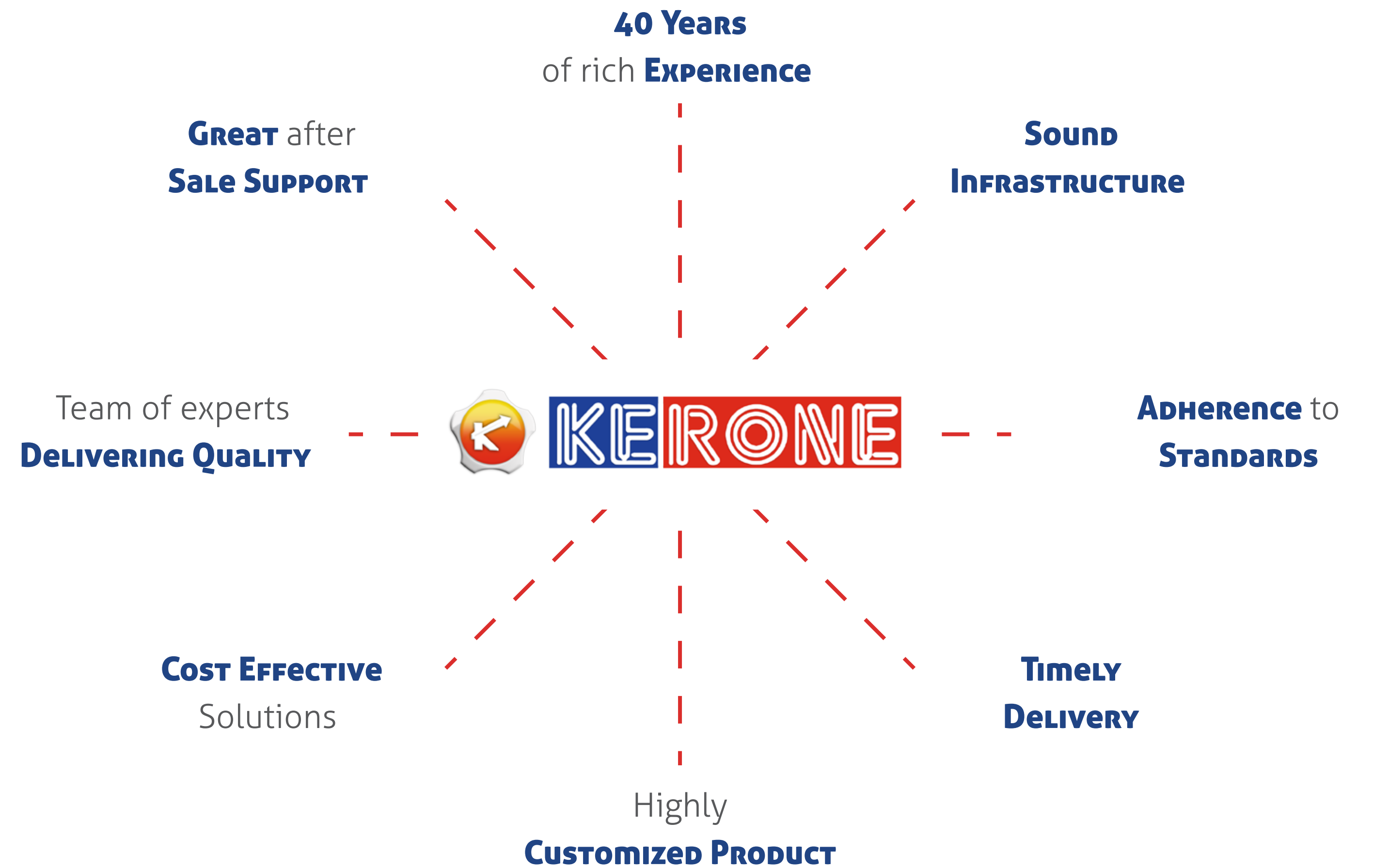
*“Enhance the value of customer operation through our customer need centric engineering solution”*

## *Mission*

- To enhance the value of customer operation through our customer need centric engineering solution.
- We are committed to provide our customers, unique and best in class products in Industrial heating, drying and cooling segment, with strategic tie-up for the technical know-how with renowned leader in the industry specific segment.

## *Vision*

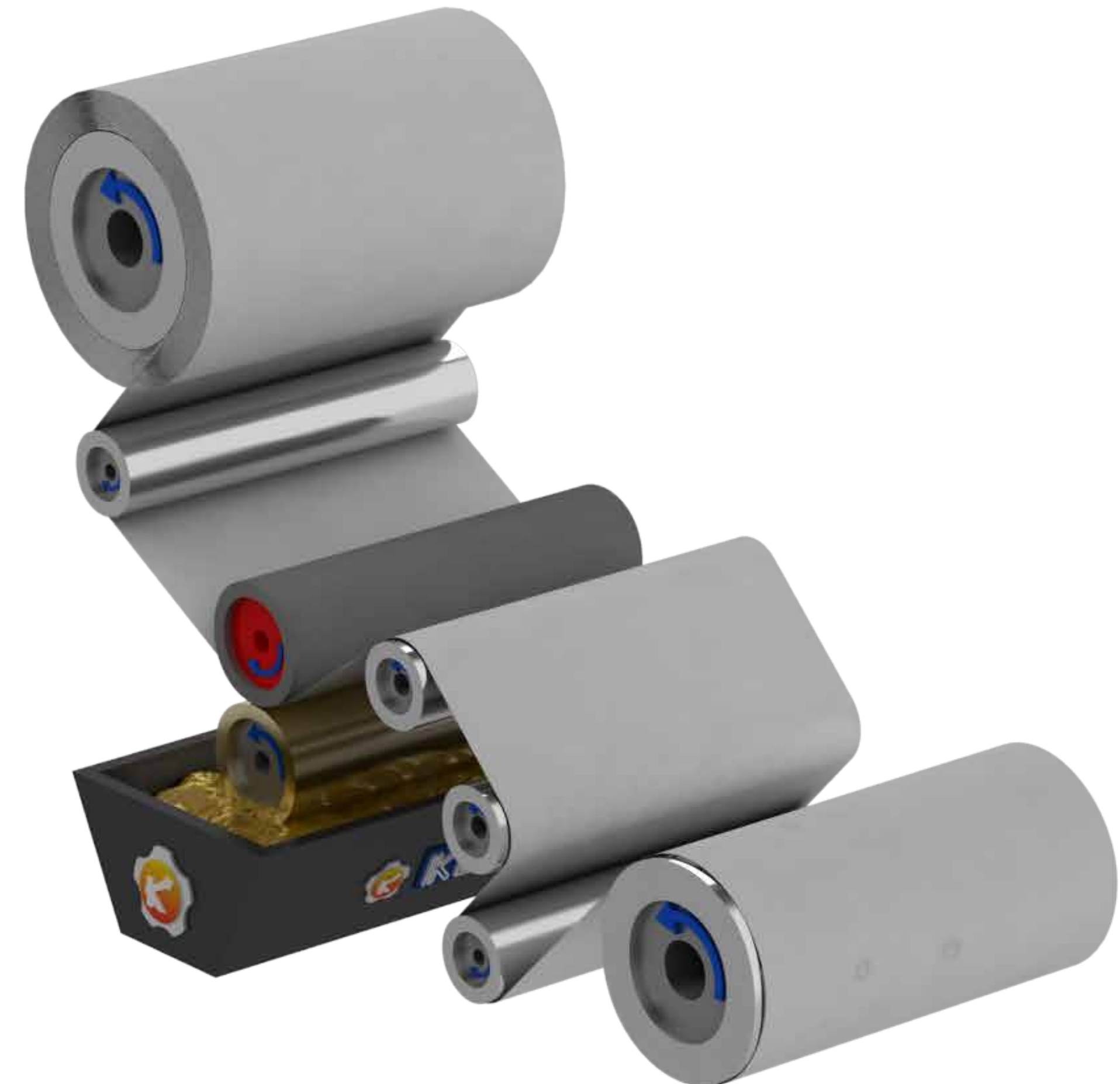
- Turn into world leader in providing specialized, top-notch quality and ecological industrial heating, cooling and drying solution across the globe.
- To attain global recognition as best of quality and environment friendly engineering solution company.



## Introduction to Gravure Coating Process

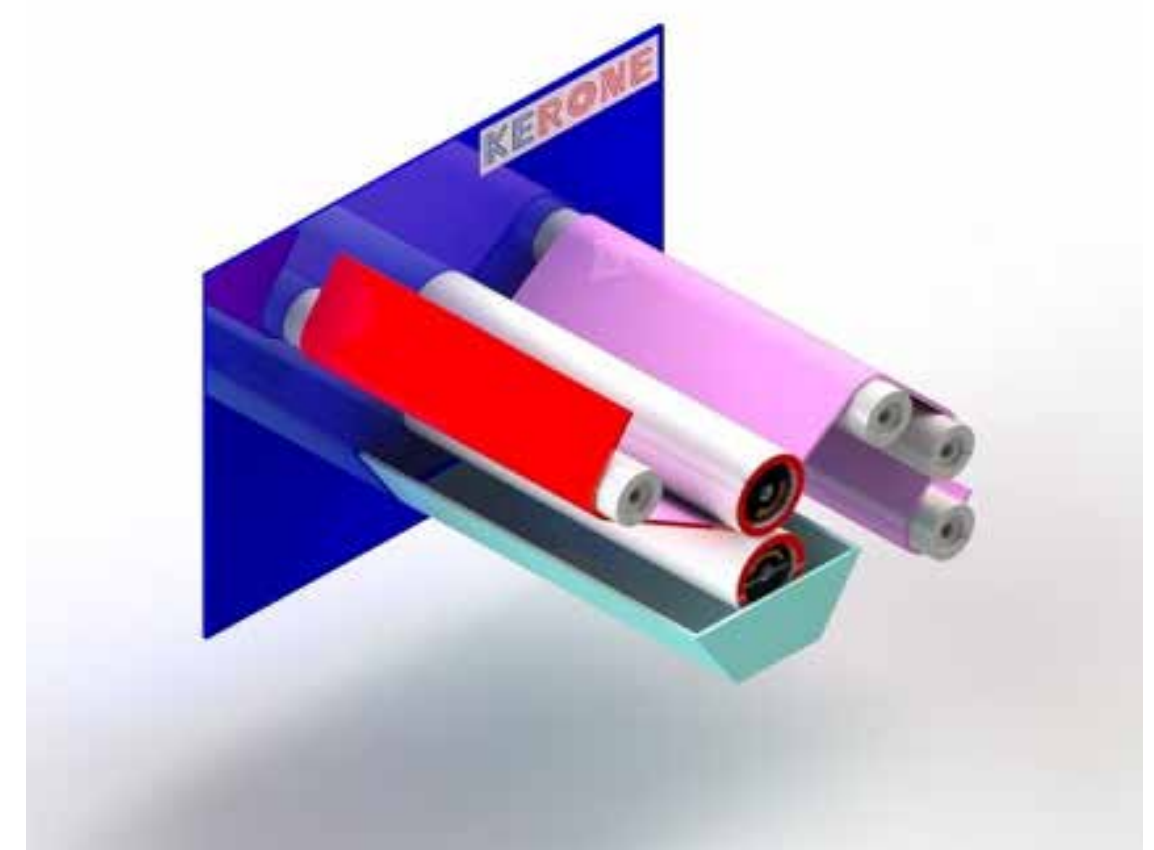
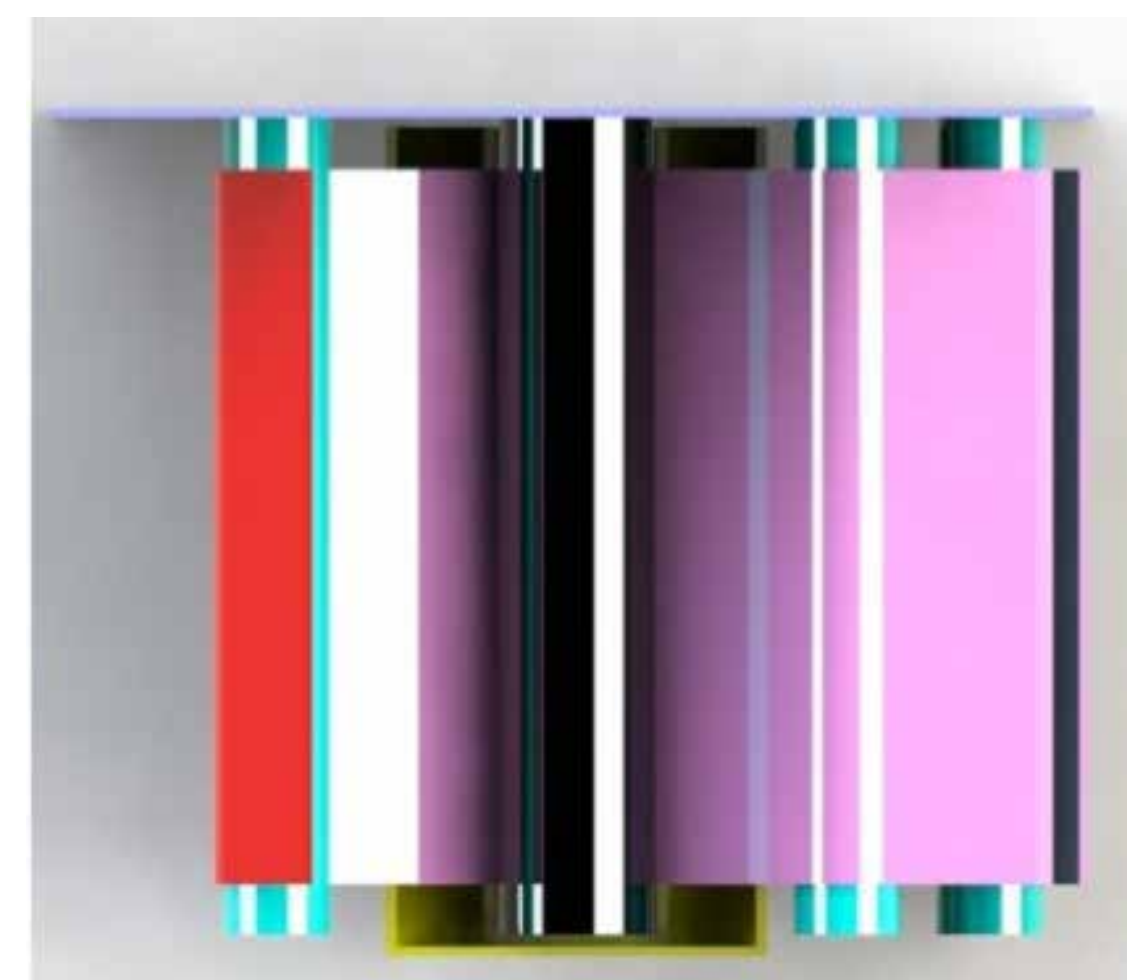
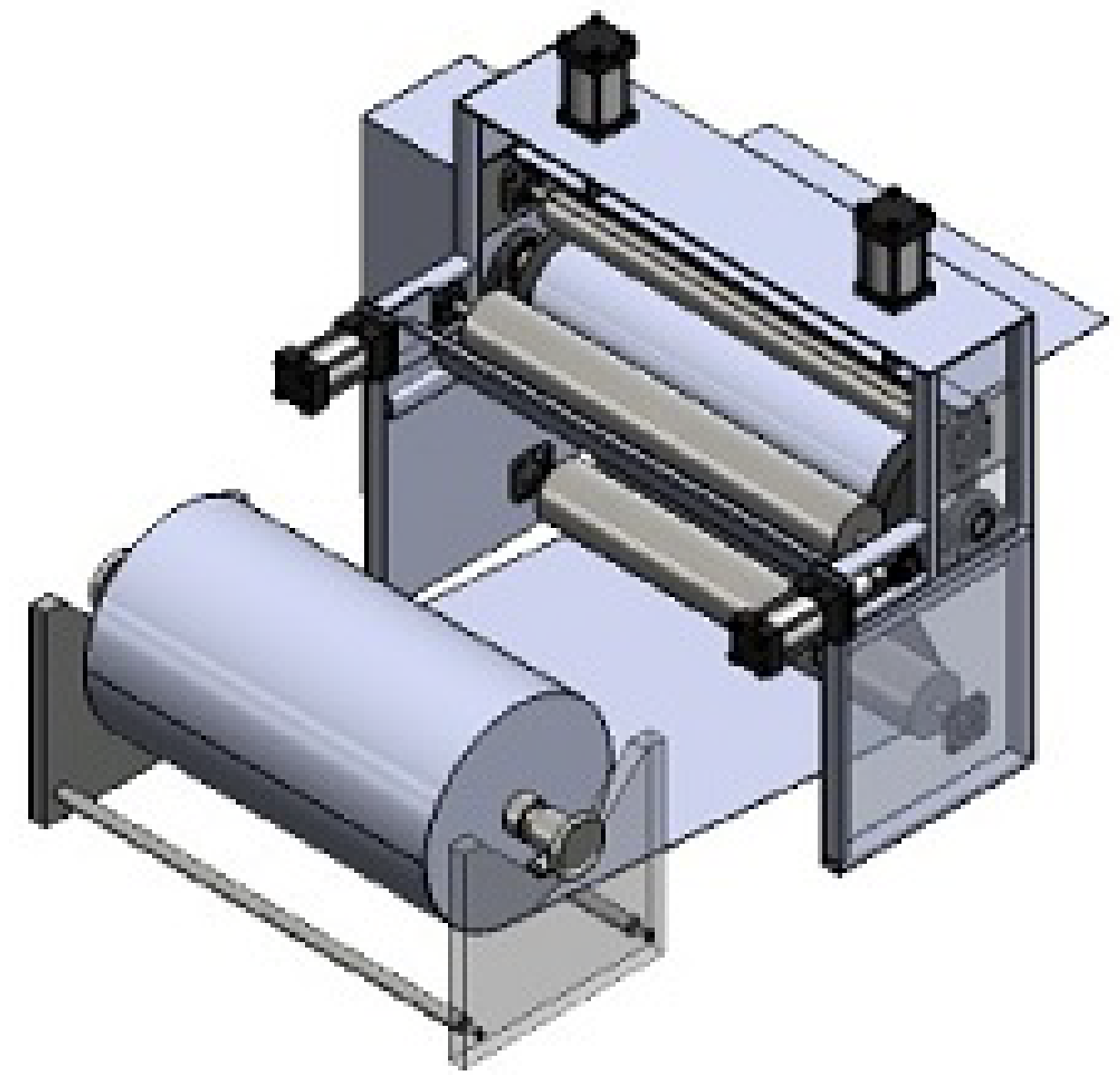
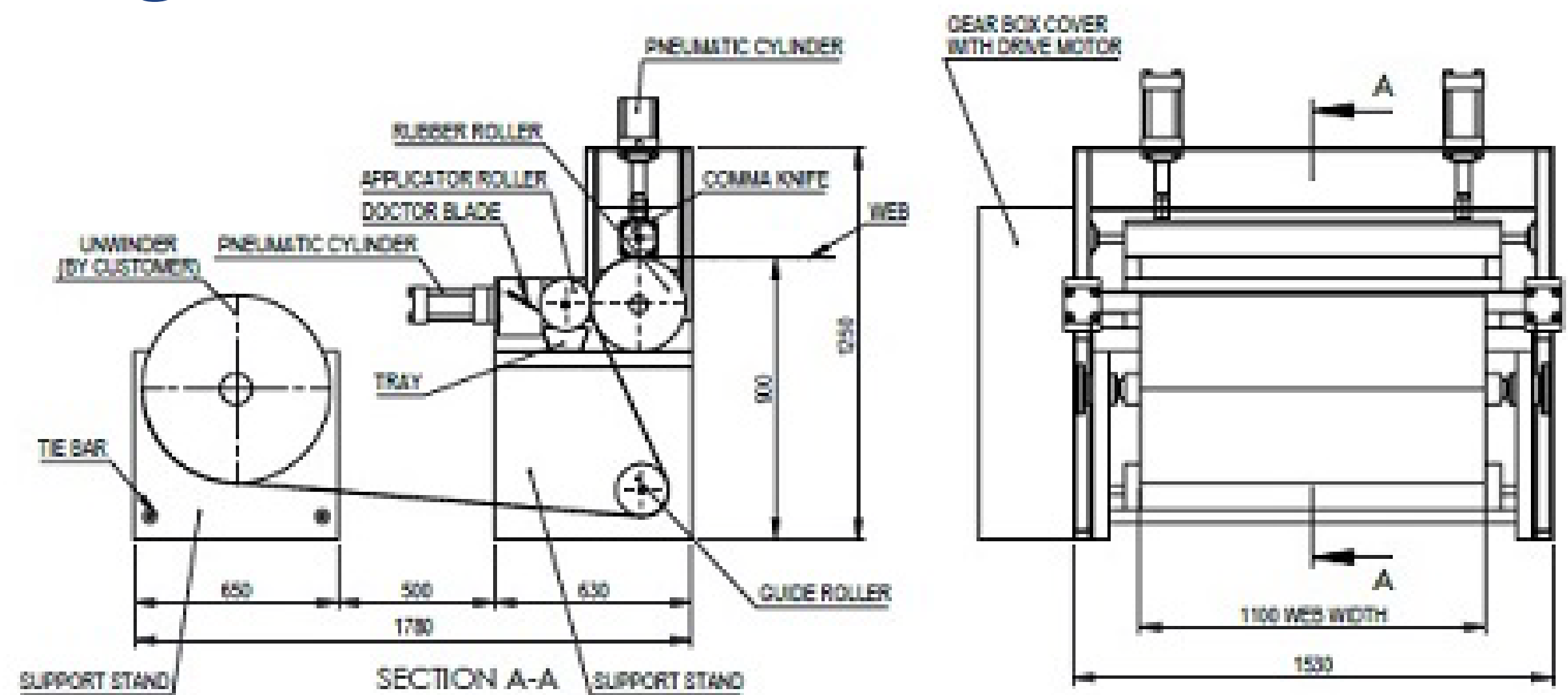
The gravure coating process depends on an engraved roller running in a coating shower, which fills the engraved specks or lines of the roller with the coating material. The overabundance coating on the roller is wiped off by the Doctor Blade and the coating is then saved onto the substrate as it goes between the Engraved roller and a Pressure Roller

The Gravure Coater has turned into a standout amongst the most famous sorts of coaters being used today because of its capacity to apply less coating with more exactness than different strategies. Gravure coating is an adaptable coating process that can apply a coating slender coating, 3-65 microns wet scope, from a low consistency arrangement, 30-2000 cp, at accelerates to 2300 fpm. The essential idea of the process is generally basic. A designed roller from a coating dish grabs the coating fluid, the abundance is doctored off and the fluid exchanged from the filled cells to the substrate. There are three sorts of Gravure coaters: direct gravure, reverse gravure, and differential offset gravure.





# Drawing



# Trusted Partner





# Our Clients



Kerone Engineering Solutions Limited

## UNIT I

B/10, Marudhar Industrial Estate, Goddev Fatak road, Bhayander(E), Mumbai-401105

### EMAIL

info@kerone.com | sales@kerone.com  
marketing@kerone.com

## UNIT II

Plot No. B-47, Addl. MIDC Anandnagar, Ambernath (East), Dist. Thane- 421506

### WEBSITE

www.kerone.com | www.kerone.net  
www.keroneindia.com

## UNIT III

Plot NO. W-104, Addl. MIDC Anandnagar, Ambernath East, Thane- 421506. (India)

### Phone

+91-22-28150612/13/14  
+91-251-2620542/43/44/45/46